



# IMPERIAL

**Civil - PEB - MEP- Cranes Under One Roof Solutions**

**Products :-**

Pre Engineering Building  
Eot Cranes  
Structural Fabrication

**Services :-**

Civil Works  
MEP Services  
Roofing Solutions

**📍 IMPERIAL TURNKEY PROJECTS**

Office / Factory

Gat.No.: 1554, Near Gloria Company, Dehu-Alandi Road, Shalarwasti, Chikhali, Pune - 411 062.

✉ [imperialturnkeyprojects@gmail.com](mailto:imperialturnkeyprojects@gmail.com) | [response@imperialpeb.com](mailto:response@imperialpeb.com)

🌐 web: [www.imperialpeb.com](http://www.imperialpeb.com) ☎ +91 9822508717, +91 9370917170

## ABOUT US

Founded in 2014, **IMPERIAL TURNKEY PROJECTS** delivering Construction solutions in steel.

**IMPERIAL TURNKEY PROJECTS** has been established on strong fundamentals of customer focus, technical expertise, commercial acumen and efficient project management skills.

**IMPERIAL TURNKEY PROJECTS** suggest and offer "Comprehensive Steel Solutions" for industrial, commercial, institutional and infrastructure projects based on "Pre-Engineered Structural Platform".

Our comprehensive range boasts of: Pre-Engineered built up sections, heavy structural fabrication, efficient Cold Formed range with "C" and "Z" purlins, Roof & Wall sheets, Deck Sheets and related building accessories.

## OUR TECHNICAL EXPERTISE

- Heat and noise insulation (by Rockwool, Air Bubble Film, Sandwich Panel).
- Access controls (by Rolling shutter, Sliding doors, Aluminum windows, Personal doors).
- Air ventilation (by Roof Ventilators, Roof Monitors, Forced Draft ventilators, Air Louvers).
- Adopting latest techniques, using latest plant & machinery
- Skilled workforce managed by experienced project managers
- Modern safety equipment is provided to all workers and staff

## OUR STRENGTHS

- Processes and documentation as per code
- Capability to execute turnkey projects
- Associated with reliable agencies and consultants
- Strong financial support from Bankers
- Large stock of own construction plant, machinery and equipment
- Dedicated and qualified engineering and administrative staff
- Adopting latest techniques, using latest plant & machinery
- Skilled workforce managed by experienced project managers
- Total Quality Management System

## CERTIFICATIONS



## TURNKEY PROJECTS

IMPERIAL TURNKEY PROJECTS is a premier name in the engineering industry engaged in offering Turnkey Project to clients. We have been offering easy and highly productive Turnkey Project and are today recognized for providing latest solutions that are rendered with accurate engineering techniques, With loads of experience and world class technology, we have emerged as the most prominent providers of Turnkey Project. We offer the Turnkey Project with a team of dedicated professionals working in close coordination with the requirements of the client.

We are the prime Turnkey Project provider that offers a one stop shop for all types of projects. We offer these Turnkey Project to our clients as per highest quality and international safety standards. These are done within time and cost effectively

- CIVIL WORK AND CONSTRUCTION
- FABRICATION
- ERECTION
- ROOFING
- INDUSTRIAL ELECTRIFICATION WORKS
- INDUSTRIAL PLUMBING WORK

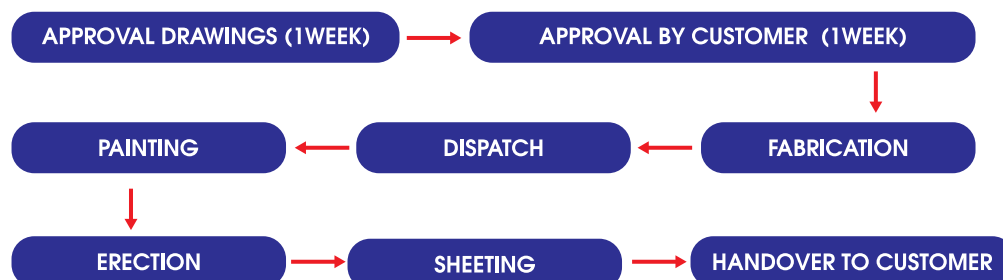
## WHAT WE OFFER IN TURNKEY PROJECTS:

- Architectural Drawings
- Approvals from local authorities
- Documentation, Project reports for financial Institutions
- Civil, Structural, Mechanical, Electrical, Plumbing designs
- Execution: Construction and Erection of plant and machineries
- Stability Certifications

## CIVIL WORK PROCESS



## PEB SHED PROCESS





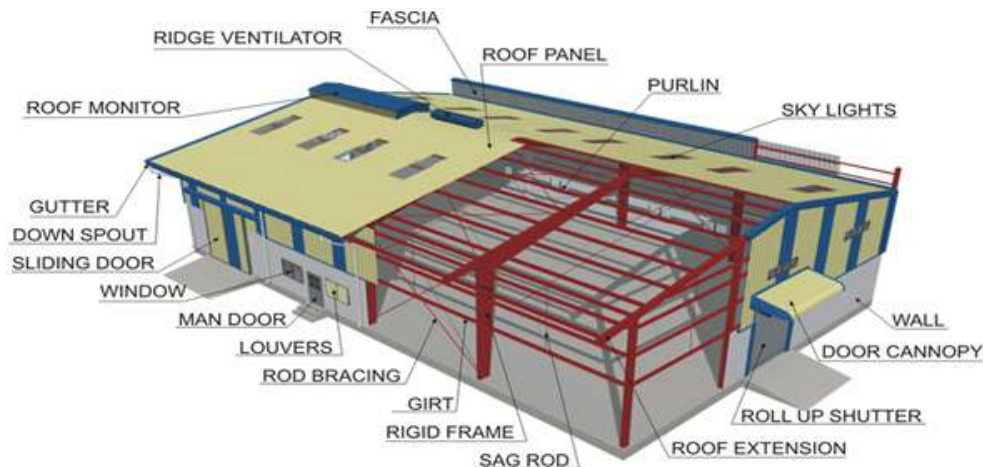
Pre-engineered metal building system is widely accepted across the globe as an efficient alternative to conventional buildings. It is the most affordable and flexible building system ideal for any low rise Industrial, Institutional or commercial application. The system offers excellent features such as speed, quality, strength and value making it the most preferred building system in the world. PEB, as the system is popularly known, offers many advantages:

### ADVANTAGES

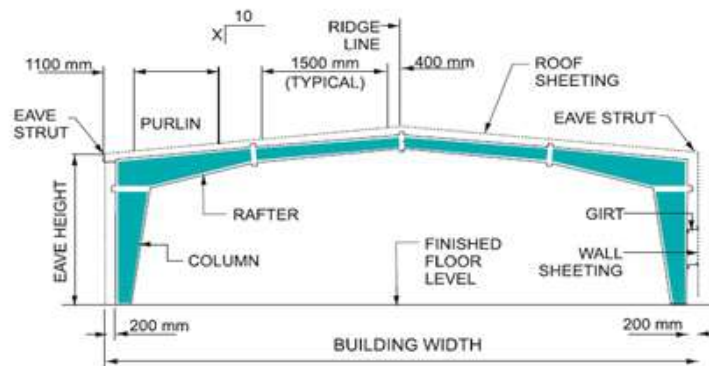
- Strength & Durability
- Lower Investment Costs
- Environment friendly
- Flexibility in expansion
- Architectural versatility
- Faster occupancy

### APPLICATION

- Industrial metal Buildings
- Ware Houses/Shades
- factories with EOT crane
- Cold Storage
- Air craft hangers.
- Fuel Station Canopies
- School, hospitals, site office, Metro station
- Marriage Halls
- Multi Storied Commercial / Trade Centers
- Railway Station / Bus Station Shelters
- Government Workshops
- All kinds of Manufacturing Units
- Automobile Ancillary Units
- Sports Complexes and Stadium

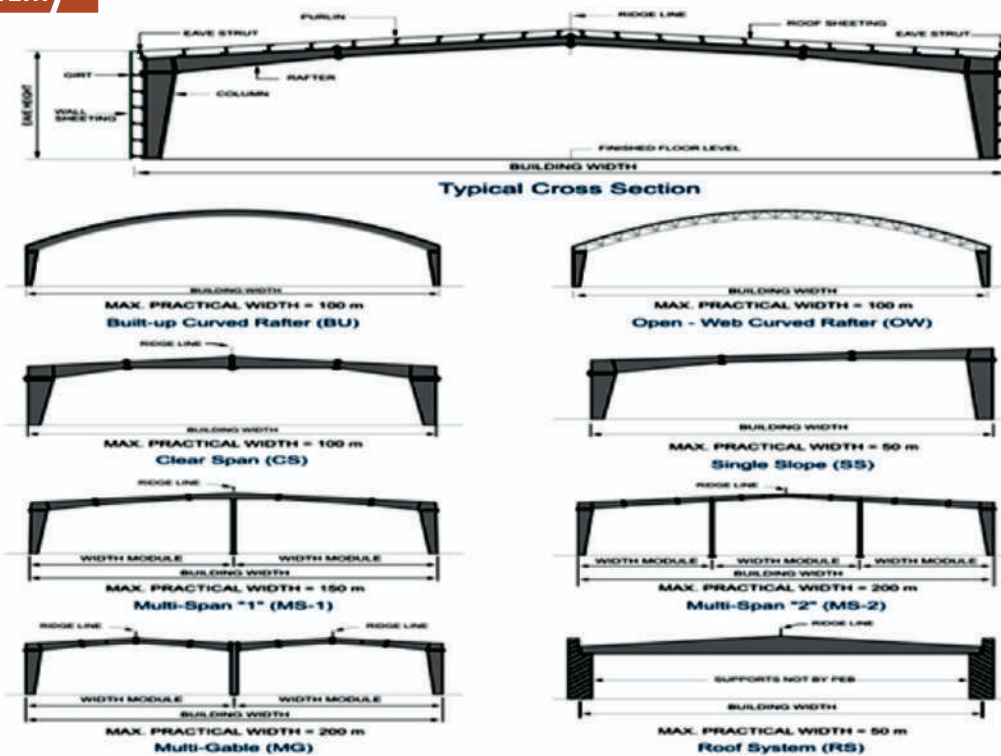


### BUILDING COMPONENT



### SECTION VIEW

## STRUCTURAL SYSTEM



## PRIMARY MEMBER

Fabricated by using high tensile steel plates welded with Integrated Automatic Beam Welding line as per AWS Standards.

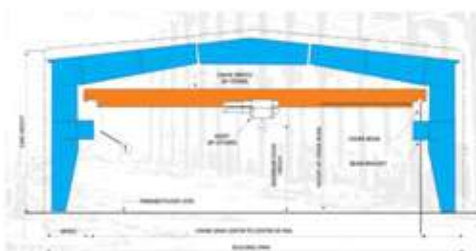
Cold Formed C and Z Purlins provide an efficient and economical solution for all roofing.. The thickness for USS 'C' section varies from 1.5 mm to 6 mm & for 'Z' Section from 1.5mm to 3.15mm depending on the steel framing requirement of the building.

## SECONDORY MEMBER



## CRANE SYSTEM

Buildings can be designed to support any required crane system. Generally, overhead travelling cranes up to 15 MT are supported on brackets. For higher capacities, an independent support system is provided. Crane support for overhead travelling cranes includes brackets, beams and bracings.



## MEZZANINE SYSTEM

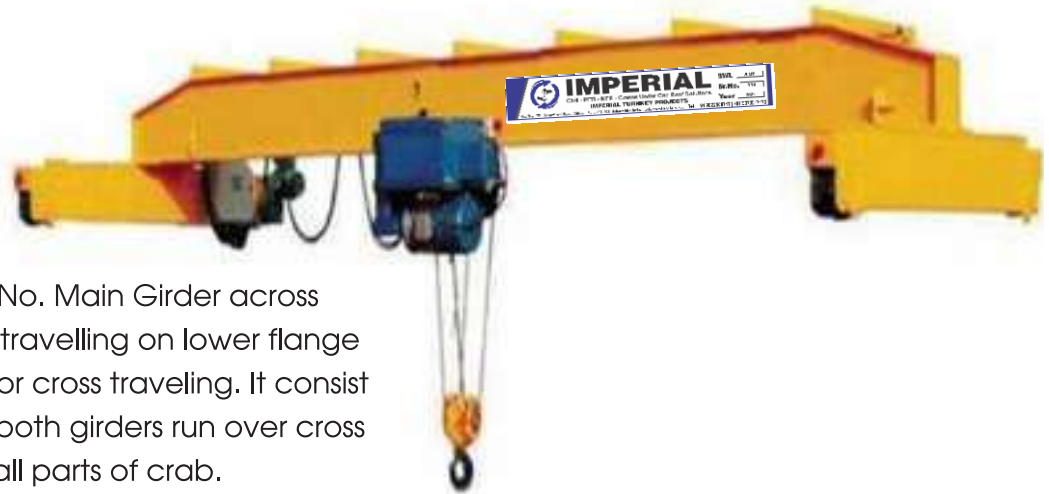
Standard Mezzanine Floor Systems consist of galvanized profiled steel deck, joists, beams and intermediate support columns. Main beams can span in lateral directions and joists in longitudinal directions.



## Cranes

- Single Girder
- Double Girder
- Goliath, Semi Goliath
- Jib Cranes
- Manufactures Conical and Modular Hoist
- Also Maintenance Modification of Cranes
- AMC of Existing Crane.
- Single & Double Girder EOT Crane
- Single & Double Girder Goliath Crane
- JIB Crane

### Single Girder EOT Crane



Single Girder EOT Crane have only 1 No. Main Girder across the span. ... It consist of Electric Hoist travelling on lower flange of Main Girder and not required rail for cross traveling. It consist of a crab mechanism travels above both girders run over cross travel rails with platform to maintain all parts of crab.

### Double Girder EOT Crane



Double Girder EOT Crane have 2 Main Girders across the span.  
2. It consist of Electric Hoist travelling on lower flange of Main Girder and not required rail for cross traveling. It consist of a crab mechanism travels above both girders run over cross travel rails with platform to maintain all parts of crab.



The goliath gantry crane finds application in various industries to lift heavy loads which cannot be handled by other material moving equipment.

These cranes find unique application in the shipping industry, automobile industry, heavy machinery manufacturing industry, etc.

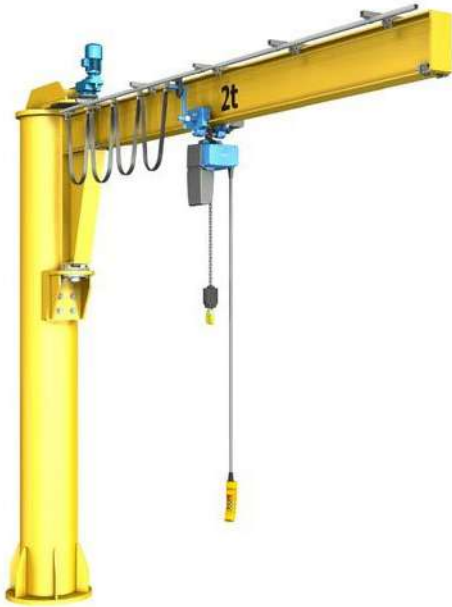
## Semi Goliath Cranes

A Semi Goliath Crane is a hybrid design with a combination of EOT Crane and Goliath Crane. ... Semi Goliath crane is also an ideal supplement in an outdoor application where the outer side of the existing building can be used to mount the gantry rails.





## Jib Cranes



A jib crane is a type of overhead lifting device that's often used in a smaller work cell area for repetitive and unique lifting tasks. The jib crane has a horizontal member (known as jib or boom) that supports a moveable hoist fixed to a wall or to a floor-mounted pillar.

## Modular Hoist



## Crabs



A hoist is a device used for lifting or lowering a load by means of a drum or lift-wheel around which rope or chain wraps. It may be manually operated, electrically or pneumatically driven and may use chain, fiber or wire rope as its lifting medium. ... Most hoists couple to their loads using a lifting hook



## CANOPIES

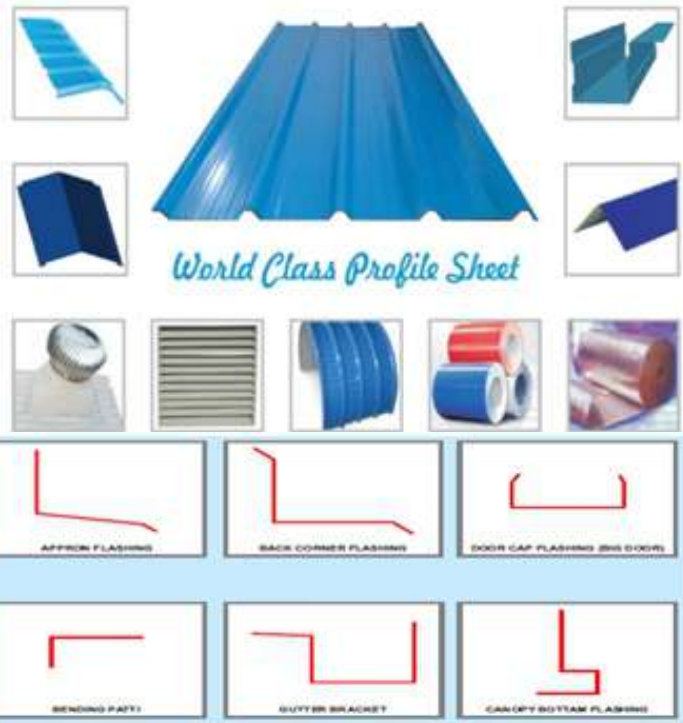
Wall canopies over doors and windows at sidewall or end wall are available. Sidewall canopies are supplied without soffit panel and end wall roof extension canopies.



## CLADDING SYSTEM

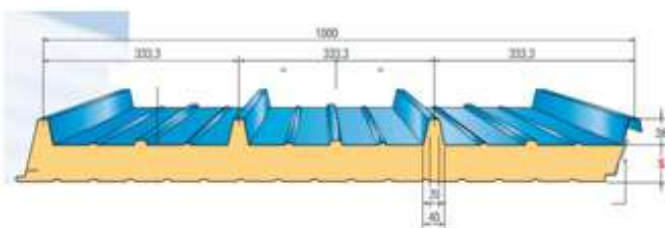
### Roof And Wall Panel:

Pre painted galvanized iron these roofing sheets are available in range of superior and aesthetic colour for roofing and cladding. A superior corrosion protecting thin coating of resin applied on the top of the Al -Zn coating. A clear organic acrylic resin coating is then applied & then thermally cured. A color coating is given on the top surface for a bright appearance with a color of the customer's choice.



### Insulated Panel:

Imperial insulated sandwich panels are a cost effective solution for long lasting, modular construction of roofing, exterior wall and internal partitions.



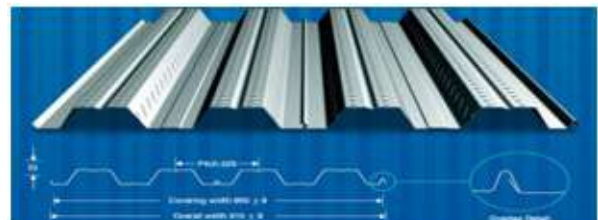
## FASCIAS

Fascias are used for architectural purposes to conceal the gable of the building. A variety of fascias either straight or inclined can be provided. Fascias are cantilevered from the main frame columns on the side wall and from the wind columns on the end wall.



### Deck sheet

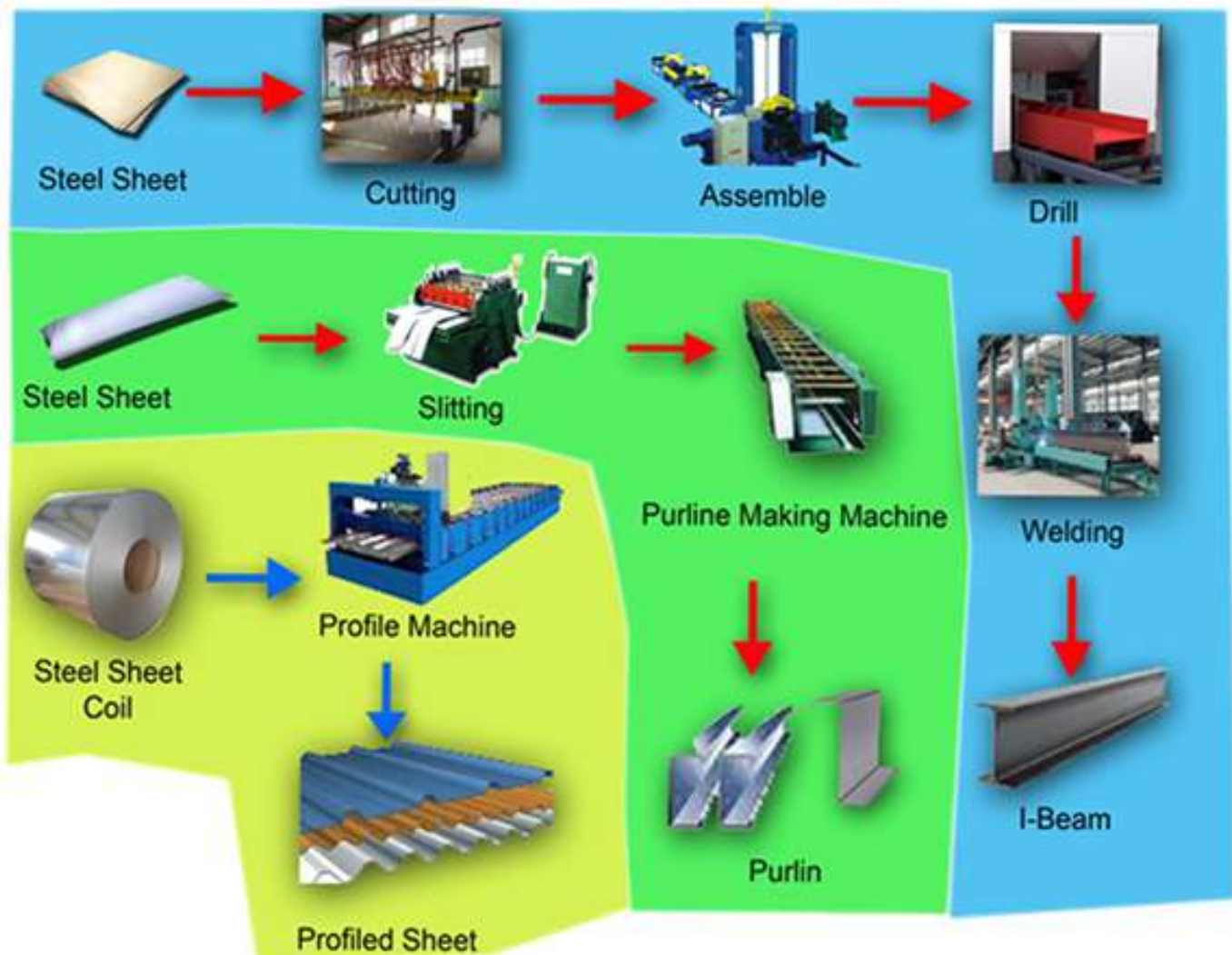
Deck panels are used for Mezzanine floor in industrial building and warehouses. These decks can be used in permanent shuttering to support the wet concrete and help in creating composite slabs and floor beams. These panels are roll formed from hot deep galvanized coils of 345MPA with thickness from 0.6 mm to 1.2mm



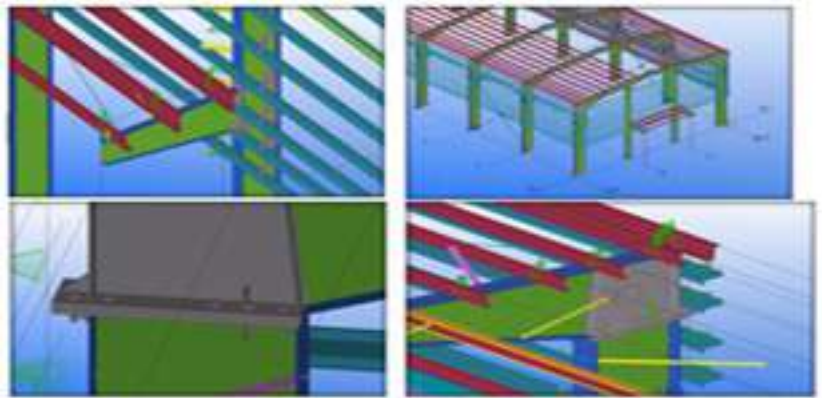
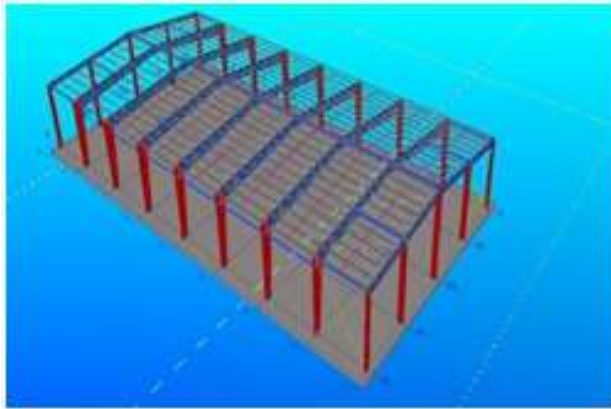


### MANUFACTURING FACILITY

The IMPERIAL PEB division consists of a 10,000 sft PEB shed in a 25,000 sft. plot in Pune. The plant equipped with sophisticated machinery for manufacturing different components of PEB as per specific design and quality standards. The manufacturing facility includes machines and systems such as CNC flame cutting, H beam assembly, submerged arc welding, Fitment assembly, primer painting and wall, roof sheet roll forming resulting in an excellent finished product. The company is supported by a quality conscious well trained technical and management staff.







An efficient Pre Engineered Building System is computer assisted, and designed for a specific use. Computerised design allows buildings to be tailored to individual customer's requirements. The complete building system is Pre Engineered to facilitate easy production & assembly on site.

State-of-the-Art Design Software for the design and detailing engineering. With STAAD PRO Design Software (Indian and American Versions) updated to the latest versions, handled by highly qualified structural engineers, even the most complex structures are designed with ease.

## APPLICABLE CODES & STANDARDS

Following are the main design codes generally used:

Welding is designed in accordance with : Structural Welding Code - Steel Manual 1996 AWS

Wind Speed is applied in accordance with : IS 875 (Part 3) : 1987 Code for Practice for Design.

Cold Formed members are designed in accordance with : 1980 Edition of Cold Formed Steel Design Manual, American Iron and Steel Institute (AISI) Hot Rolled Sections and Built up sections are designed in accordance with : 1989 Manual of Steel Construction, Allowable stress Design, American Institute of Steel Construction (AISI).

## MATERIAL SPECIFICATIONS

SL No.	Materials	Specification
1.	<b>Built up members</b>	ASTM A 572 M Grade 345 Type 1 (or) its Equivalent
2.	<b>Hot- Rolled Members</b> <ul style="list-style-type: none"> <li>• Beam &amp; Columns</li> <li>• Tubes</li> <li>• Channels</li> <li>• Pipes / Handrails</li> </ul>	IS 2062/1999 Grade B JIS G 3466 STKR 490 Or EN 10210-1 S355J2H IS 2062/ 1999 Grade B ASTM A 53M Type E or S Grade A
3.	<b>Cold Formed Secondary Members</b> <ul style="list-style-type: none"> <li>• Black Steel</li> <li>• Galvanized Steel</li> </ul>	ASTM A 607 Grade 50 ASTM A 653M SS Grade 340 Class I
4.	<b>Sheeting &amp; Liner Panels</b> <ul style="list-style-type: none"> <li>• Galvalume Steel</li> </ul>	ASTM A 792M Grade 345Bm AZM 150
5.	<b>Mezzanine Deck Panels</b> <ul style="list-style-type: none"> <li>• Galvanized Steel</li> </ul>	Cold Rolled Steel ASTM A 653M Grade 345 Z120
6.	<b>X- Bracing Members</b> <ul style="list-style-type: none"> <li>• Rods</li> <li>• Angles</li> </ul>	ASTM A 615M Grade 300 (or) ASTM A 36M (or) equivalent ASTM A 572M Grade 345 type I
7.	<b>Anchor Bolts</b>	ASTM A 36N (or) equivalent Hot dip Galvanized ASTM A 153M Class C
8.	<b>High Strength Bolts</b>	ASTM A 325M Class 8.8 Type 1 (or) equivalent Hot Dip Galvanized to ASTM A 153M Class C (or) DIN 933 Class 8.8 Hot Dip Galvanized
9.	<b>Machine Bolts</b>	DIN 933 Class 4.6/ 4.8 (or) equivalent Electro Plated Yellow Chromate



## ACCESSORIES

Sliding Door & Canopy



Louver



Ridge Ventilator



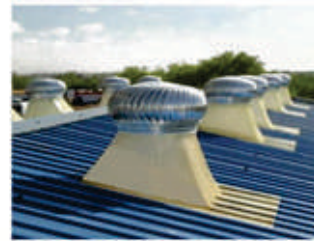
Flashing & Trims



Gutter & Downspout



Turbo Ventilator



Skylight



Window



fascia



## COMPLETED PROJECTS



**AMIT ENGINEERING**  
25000 SQ.FT.



**AMG ASSOCIATES**  
10000 SQ.FT.



**SHREEMAN GROUP**  
55000 SQ.FT.



**GLOBAL TECH**  
20000 SQ.FT



**FOCUS ENGINEERING**  
30000 SQ.FT



**SHREENATH FORGING**  
16000 SQ.FT



## COMPLETED PROJECTS



**PRATIBHA MEDINOX**  
8000 SQ.FT



**MENAL MECRA**  
12000 SQ.FT



**VARAD ENTERPRISES**  
10000 SQ.FT



**ARMY PUBLIC SCHOOL**



**AVNEE LANDMARK**  
20000 SQ.FT



**CHROMEWELL LTD.**  
20000 SQ.FT



**GLOBAL TECH**  
8000 SQ.FT



**DESHPANDE ASSOCIATES**  
12000 SQ.FT



**SATAV WAREHOUSE**  
20000 SQ.FT



**BALAJI ENGINEERING**  
20000 SQ.FT



**JADHAV MANGAL KARYALAY**  
9000 SQ.FT



**AIRCRAFT HANGER**  
10000 SQ.FT



## COMPLETED PROJECTS



**VIGHNHARTA**  
7000 SQ.FT



**VINAY TRACTORS**  
20000 SQ.FT



**KASHA WAREHOUSE**  
25000 SQ.FT



**WAREHOUSE**  
25000 SQ.FT



**MY CAR SHOWROOM**  
27000 SQ.FT



**S.R. FURNITURES**  
10000 SQ.FT

## ON GOING PROJECT



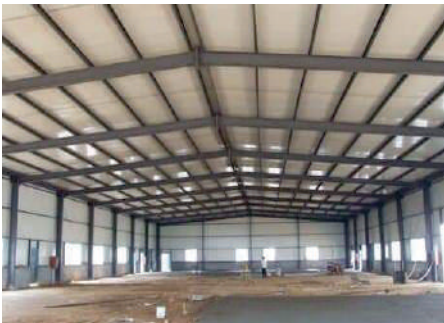
-



-



-



-



-



-



ON GOING PROJECT



-



-



-



-



-



-



-



-



-



-



-



-



# IMPERIAL

Civil - PEB - MEP- Cranes Under One Roof Solutions

## 📍 IMPERIAL TURNKEY PROJECTS

Office / Factory

Gat.No.: 1554, Near Gloria Company, Dehu-Alandi Road, Shalarwasti, Chikhali, Pune - 411 062.

✉ imperialturnkeyprojects@gmail.com | response@imperialpeb.com

🌐 web: [www.imperialpeb.com](http://www.imperialpeb.com) ☎ +91 9822508717, +91 9370917170